



LED LOWBAY LUMINAIRE
I-VALO MARCO®

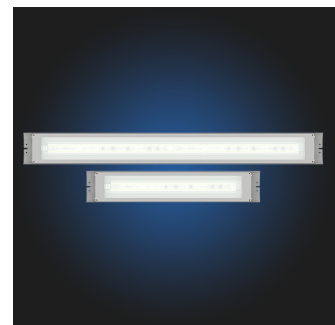
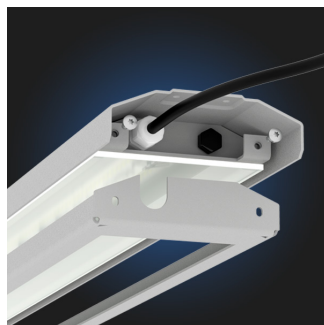
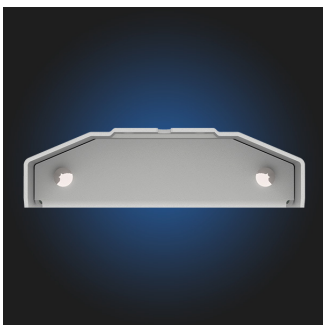
Designed and manufactured in Finland!



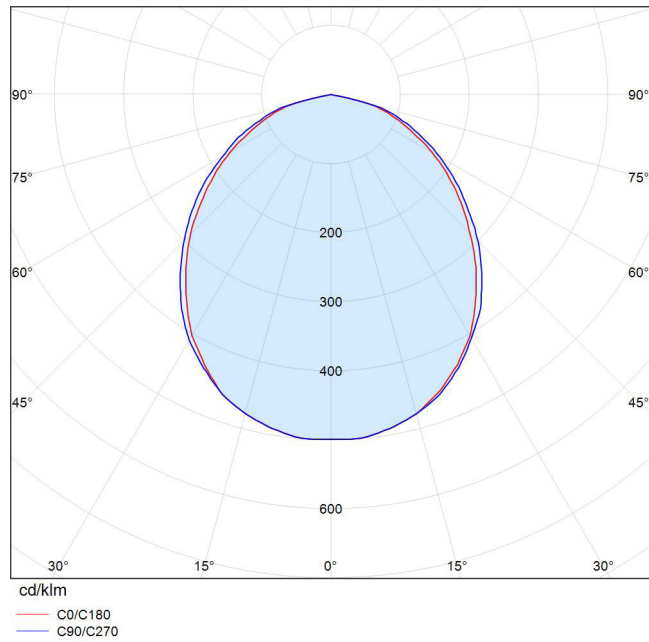
Compact LED luminaire for industrial needs

The MARCO luminaire has a low frame, but is despite its size robust, mechanically stable and well suited to the challenging conditions within the industry. The frame is made of polyester-coated aluminium and the cover glass of tempered glass. The luminaire is equipped with I-Valo filtering technology. The wide light distribution is suitable for corridors, maintenance bridges and other low spaces.

- Cover glass: tempered frosted glass. Upon request, also available with an acrylic cover.
- Body: polyester-coated aluminum ensures an excellent corrosion resistance
- Filter: GORE
- Connection: 1.5 m cable with schuko plug, quick connector or without plug
- Installation: I-Valo's wide range of mounting brackets are also suitable for MARCO luminaries

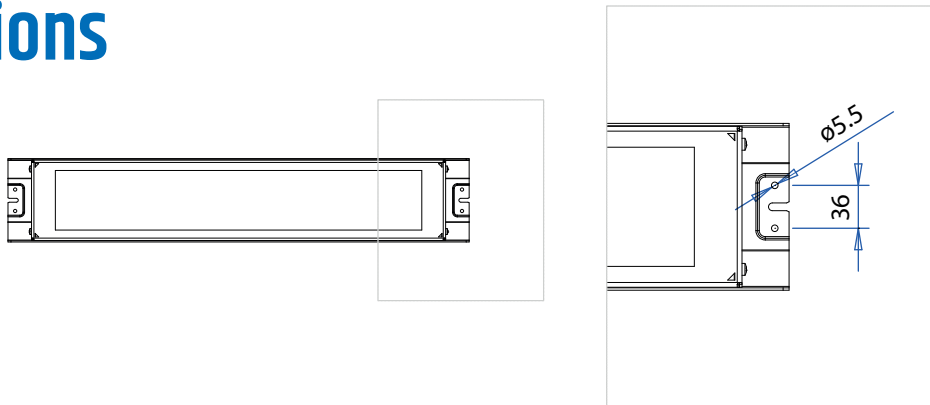


Light distribution

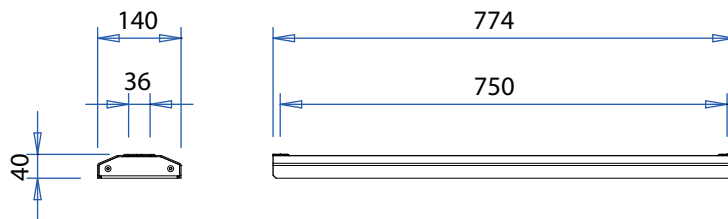


WIDE
(FROSTED GLASS)

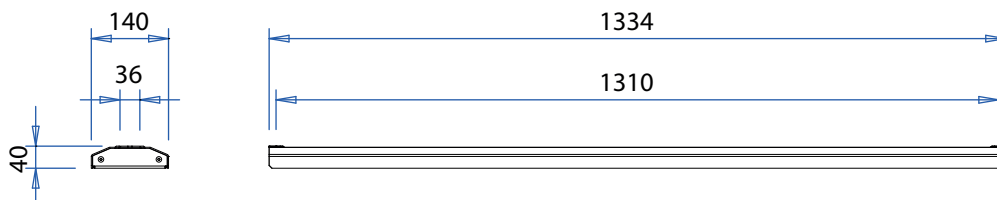
Dimensions



MA10



MA20





I-VALO GUARANTEES PERFORMANCE VALUES OF THE LUMINAIRE WITHIN THE SPECIFIED TA TEMPERATURE RANGE*

Ta class	-35°C... +50°C
Input power	MA10: 26 W, MA20: 53 W
Luminous flux of the luminaire	MA10: 3600 lm, MA20: 7250 lm
Luminous efficacy of the luminaire	MA10: 138 lm/W, MA20: 137 lm/W
Colour temperature	4000 K
Colour rendering index	Ra >80
MacAdam value	3 SDCM
Enclosure rating (IP)	IP66
IK class	IK08
Light distribution	Wide
Cover glass material	Tempered, frosted safety glass. Upon request, also a PMMA cover is available.
Body material	Polyester-coated aluminum
Connection options	ON/OFF version: cable 1.5 m + schuko plug (1.5 mm ²) Free end cable 1.5 m (1,5 mm ²) Quick connect terminal with 1,5m 1,5 mm ² cable (3-fold) Through-wired, RST Mini panel connector (3-fold)
Control	ON/OFF
Frequency	50/60 Hz
Inrush current	MA10: 5A 50µs (I _{peak} (A) Δt bei I _{peak} = 50% (s)) MA20: 10A 50µs (I _{peak} (A) Δt bei I _{peak} = 50% (s))
Voltage	220 - 240 V
Power factor	MA10: 0,95, MA20: 0,96
Weight	MA10: 3,1 kg, MA20: 5,4 kg

*) Maximum ambient temperature (Ta class) for which the luminaire is classified and in which the specified technical values apply. However, the **operating temperature range of the luminaire is wider than the specified Ta value**. The ambient temperature affects e.g. the luminous flux and lifetime of the luminaire.