



UPDATABLE LED LUMINAIRE  
**I-VALO DAVI®**

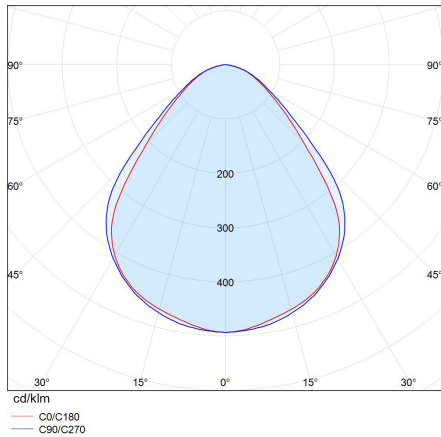


## LED luminaire with an update possibility

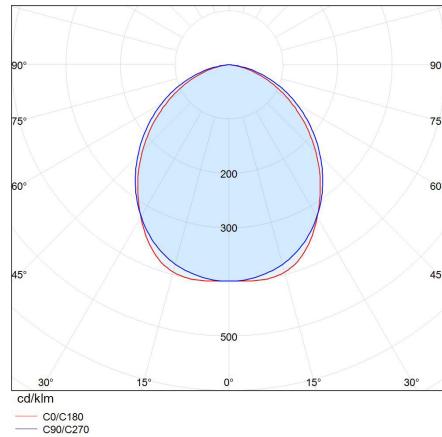
DAVI is a top-quality LED luminaire with an update possibility, designed especially for the lighting needs of the industry. The technology of the luminaire is replaceable, which means that the whole luminaire does not need to be replaced when it reaches the end of its lifespan! The availability of spare parts is guaranteed by constantly using the latest LED technology, which will always fit into the same frame.

- Cover glass: clear tempered glass, clear tempered glass or PMMA with anti-glare film, frosted glass. Available with polycarbonate cover if necessary.
- Filters: GORE filter, dust filter, plastic covered dual-effect filter, metal covered dual-effect filter, ammonia filter
- A wide range of mounting brackets

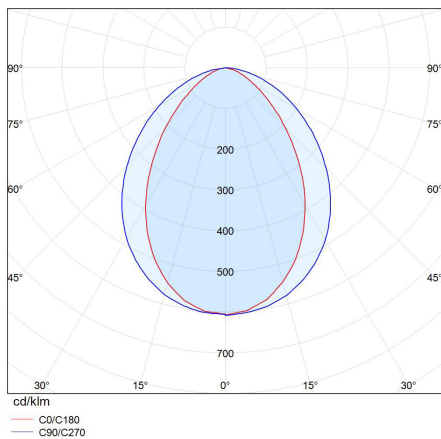
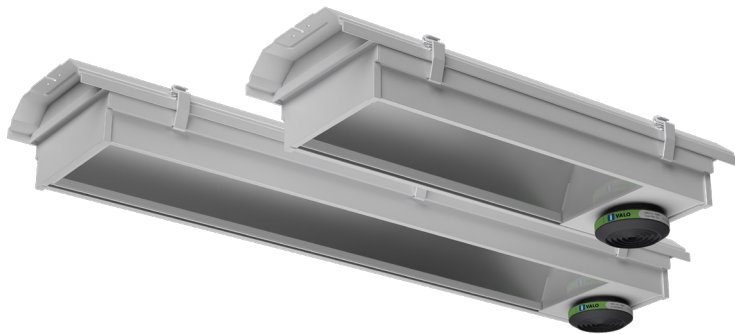
# Light distribution



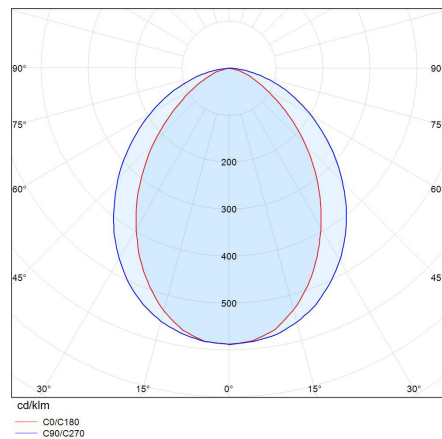
WIDE  
(CLEAR GLASS OR PMMA  
WITH ANTI-GLARE FILM)



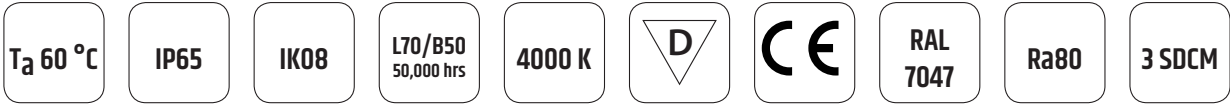
WIDE  
(FROSTED GLASS)



MEDIUM WIDE  
(CLEAR GLASS)



MEDIUM WIDE  
(FROSTED GLASS)



## I-VALO GUARANTEES PERFORMANCE VALUES OF THE LUMINAIRE WITHIN THE SPECIFIED TA TEMPERATURE RANGE\*

Ta class	-25°C... +60°C (varies between models)
Input power	34 W - 166 W
Luminous flux of the luminaire	4 400 lm - 27 500 lm
Luminous efficacy of the luminaire	Up to 166 lm/W
Colour temperature	4000 K
Colour rendering index	Ra >80
MacAdam value	3 SDCM
Enclosure rating (IP)	IP65
IK class	IK08
Light distribution	Medium wide and wide
Cover glass material	Tempered safety glass (clear glass, clear glass/PMMA + anti-glare film, or frosted glass). Can also be equipped with polycarbonate if necessary.
Body material	Polyester-coated aluminium
Connection options	ON/OFF version: cable 1.5 m + schuko plug DALI version: cable 4.0 m (L,N,PE,DA,DA) - 5 x 1.5 mm <sup>2</sup> Fixed connection 5 x 2.5 mm <sup>2</sup> + 2 x 2.5 mm <sup>2</sup> Quick connector with 1.5 m cable (3 or 5-fold) Panel feed-through connector (3-fold)
Control	DALI or ON/OFF
Frequency	0/50/60 Hz
No. luminaires per circuit breaker	See the luminaire datasheets on <a href="http://www.i-valo.com">www.i-valo.com</a>
Voltage	220 - 240 V
Power factor	0.92 - 0.98



\*) Maximum ambient temperature (Ta class) for which the luminaire is classified and in which the specified technical values apply. However, the **operating temperature range of the luminaire is wider than the specified Ta value**. The ambient temperature affects e.g. the light flux and lifetime of the luminaire.