

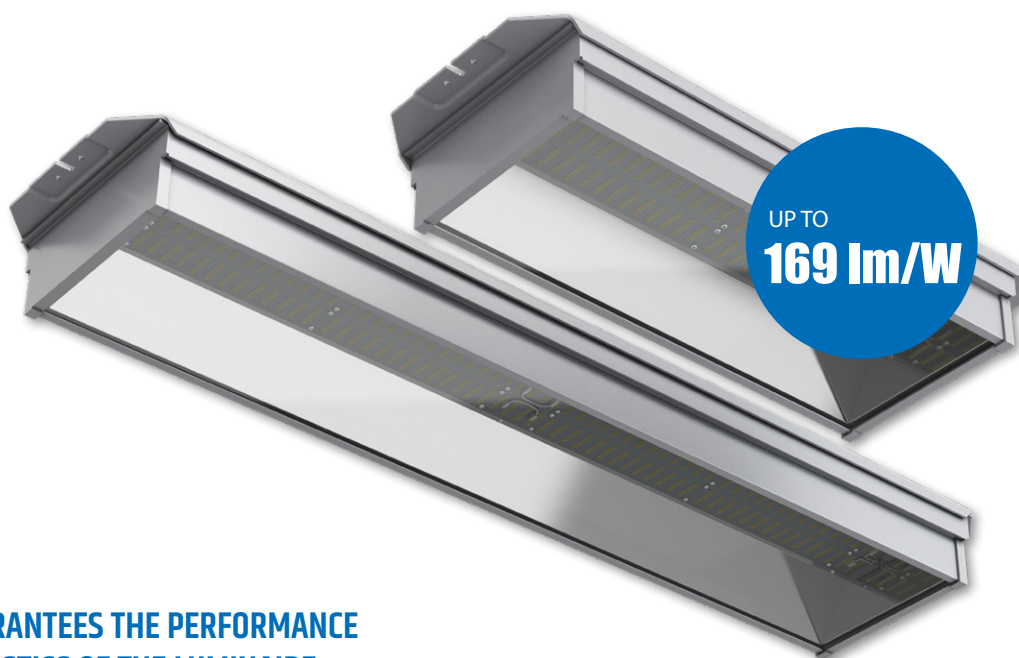


i VALO

**LED LOWBAY
I-VALO DORA**

GENERAL-PURPOSE LED LUMINAIRE FOR INDUSTRIAL APPLICATIONS

DORA & DORA+



I-VALO GUARANTEES THE PERFORMANCE CHARACTERISTICS OF THE LUMINAIRE WITHIN THE MENTIONED TA TEMPERATURE RANGE

With IP67 rating!

Ta class	-30°C... +60°C (varies by luminaire type)
Input power	28 W, 54 W, 109 W or 146 W
Colour temperature	4000 K (neutral white)
Luminous flux	3 900 lm - 22 700 lm (varies by luminaire type)
Luminous efficacy of the luminaire	Up to 169 lm/W
Enclosure rating	IP67
Protection class	I
Cover material	Acrylic (PMMA), polycarbonate (PC) or tempered safety glass
Light distributions	Medium-wide (M) and wide (X)
Connection	Cable with a plug 1.5 m (ON/OFF version) or cable 4.0 m (DALI version)
Control	ON/OFF or DALI-2
Frequency	0/50/60 Hz
Operating voltage range	198-264 VAC, 176-280 VDC
Efficiency factor	0.85 - 0.96 (varies by luminaire type)
Weight	Dora 3.5 kg and Dora+ ~ 7 kg





LED luminaire for low and medium-high spaces

I-VALO DORA is a new high quality family of luminaires for general lighting in industrial spaces. The luminaire can be used for similar applications as traditional lowbay luminaires equipped with discharge lamps or fluorescent luminaires. The DORA family of luminaires includes luminaire frames of different lengths; short models are available with either one or two light modules, while the longer luminaire frames are available equipped with two or four light modules (see the dimensional drawings, p. 7).



Effective anti-glare film

The luminaire is also available equipped with a high-quality anti-glare film. The cover glass is then protected with a film which prevents discomforting glare. The light distribution of a luminaire equipped with the film is wide (X).



Mechanical durability

- > the frame of the luminaire is made of sturdy polyester-coated aluminium
- > high corrosion resistance

Versatile cover glass options

- > polycarbonate, acrylic, tempered safety glass
- > the most effective material for the space can be selected according to the requirements of the installation location

Equipped with a GORE filter

- > keeps the inner parts of the luminaire clean
- > protects the sensitive LED chips
- > ensures that the luminaire has a long service life

No heat sink

- > facilitates the cleaning of the luminaire

Anti-glare film

- > prevents discomforting glare
- > provides an even light distribution
- > useful especially in low installation locations

Easy installation

- > versatile selection of brackets, find out more on our website www.i-valo.com

High Finnish quality

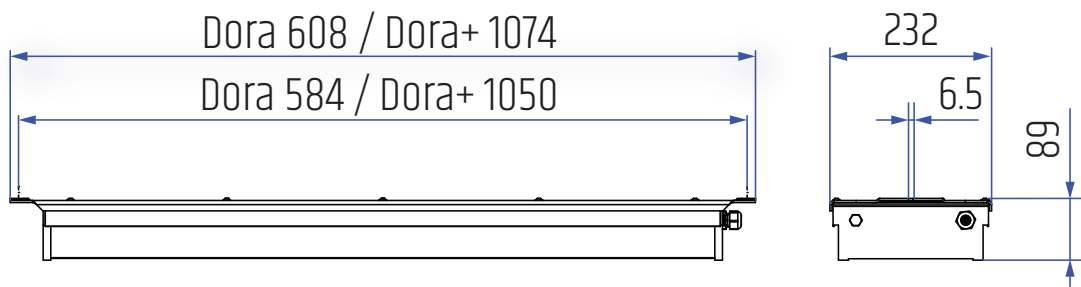
- > the luminaires are manufactured in Tavastia Proper in Finland
- > only the best components available are used in assembling the luminaires
- > the basis of I-Valo's luminaire design is always to achieve an excellent, consistent quality of light

I-VALO filter technology

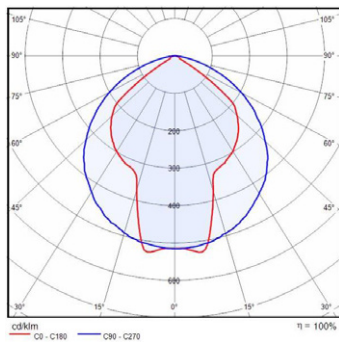
The luminaires are equipped with I-Valo filter technology which guarantees that the products have a long service life. The filter cleans the inflowing pressure-balancing air, keeps the inner parts of the luminaire clean and protects the sensitive LED chips. This ensures that the luminous efficacy of the luminaire is maintained even in the toughest conditions.



LUMINAIRE DIMENSIONS

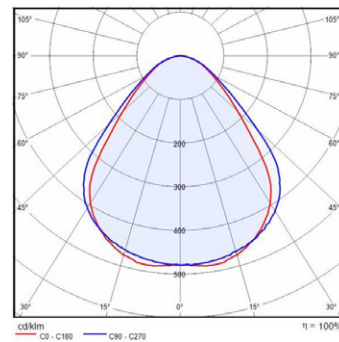


LIGHT DISTRIBUTION



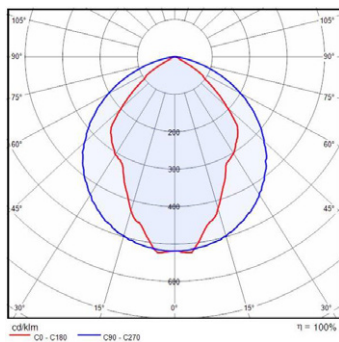
Dora 28 W, Dora+ 54 W

medium-wide light distribution (M)



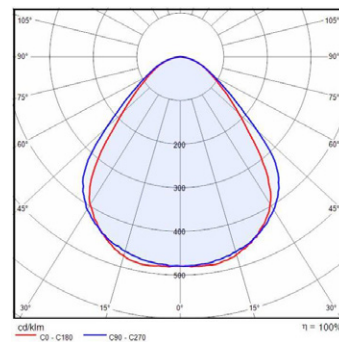
Dora 28 W, Dora+ 54 W

wide light distribution (X)



Dora 54 W, Dora+ 109 W, 146 W

medium-wide light distribution (M)



Dora 54 W, Dora+ 109 W, 146 W

wide light distribution (X)



14500 Iittala, FINLAND
Tel. +358 (0)10 501 3000
info@i-valo.com

www.i-valo.com



A Fagerhult Group Company