



UPDATE & MAINTENANCE
I-VALO LED SERVICE PACKAGES

I-VALO LED RETROFIT & UPDATE PACKAGES

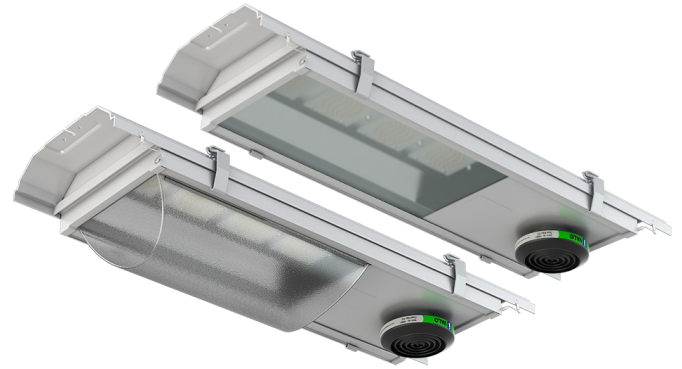
Sustainable products

Developing high-quality products with an emphasis on reliability with a long operating lifetime has always been one of the main priorities for I-Valo. Offering a wide selection of retrofit and update packages for I-Valo luminaires is an important part of our environmental thinking and sustainable product development.

A complete package including:

- LED modules
- Drivers
- Optics

Pre-installed in one package!



Savings with modern lighting technology

I-Valo products are sustainable - the technology can be updated while the robust technical parts, such as the luminaire body and installation brackets, are retained. This is how I-Valo customers with traditional I-Valo luminaires can take advantage of modern technology and more efficient light sources, and thus achieve remarkable energy savings. With LED retrofit packages, for example, you can convert your existing HID and fluorescent fittings to modern LED luminaires.

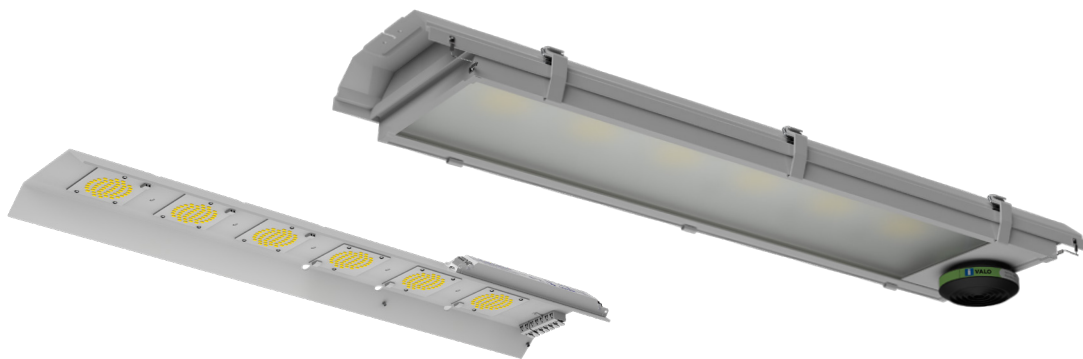
6721 LED & 6741 LED

for ST/MT-70W - 150W lowbays

- A RetroFit package for I-Valo HID luminaires 6111, 6121, 6201, 6211, 6221 and 6301
- Includes a complete LED technique package with drivers
- As a rule of thumb, 6721 LED can be used to replace light sources like ST/MT-70W and MT-100W, whereas 6741 LED corresponds to ST-100W and MT-150W lowbay luminaires

| ITEM NO | INPUT POWER | TA CLASS | LUMINOUS FLUX (LED MODULE) |
|------------------|-------------|---------------|----------------------------|
| 6721.200.V3.LM11 | 54 W | -25°C...+55°C | 9,300 lm |
| 6741.200.V3.LM11 | 71 W | -25°C...+50°C | 12,300 lm |





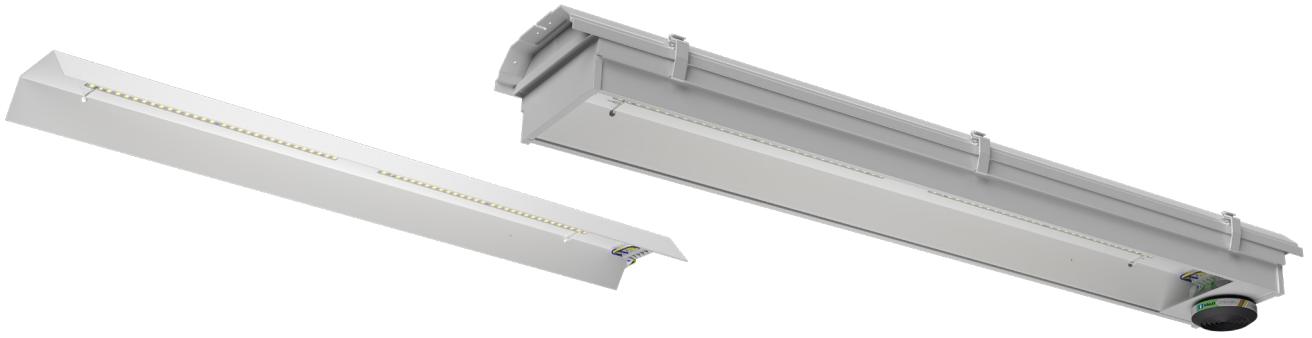
6231 LED

for MT-250W lowbays

- A RetroFit package for I-Valo HID luminaire 6231 (MT-250 W)
- The package includes an LED module equipped with two electronic drivers, a new cover frame with tempered frosted glass and a dust filter.
- The new lower cover optimises the luminous efficacy while effectively preventing uncomfortable glare.

Note: This RetroFit package also includes a new glass cover + filter!

| ITEM NO | INPUT POWER | TA CLASS | LUMINOUS FLUX (LUMINAIRE) | COVER MATERIAL |
|------------------|-------------|---------------|---------------------------|-----------------------------------|
| 6231.200.V3.LM11 | 118 W | -25°C...+45°C | 15,000 lm | Tempered frosted glass |
| 6231.300.V3.LM11 | 118 W | -25°C...+45°C | 15,800 lm | Satin coated acrylic plate (PMMA) |



9441 LED & 9451 LED

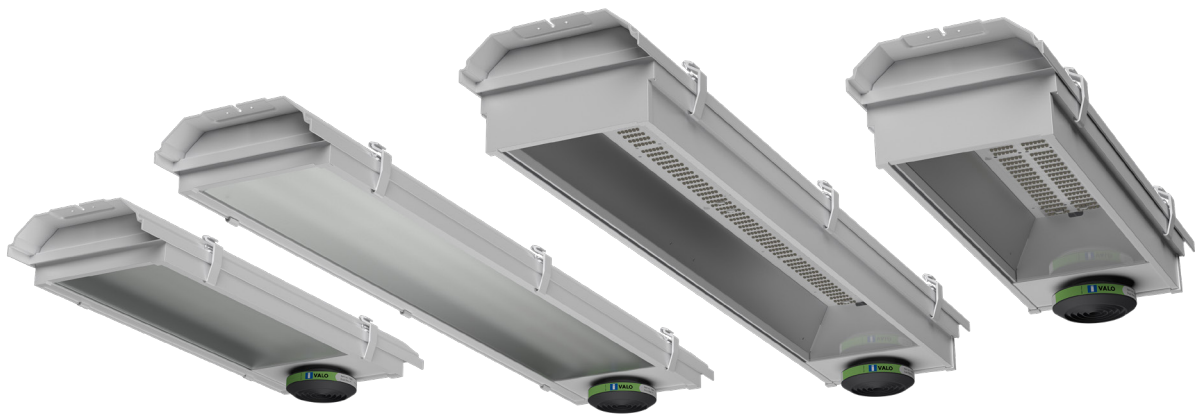
for I-VALO T5 fluorescent luminaires

- For I-Valo T5 fluorescent luminaires 9441 (2 x FD-54W-G5) and 9451 (2 x FD-80W-G5)
- Includes a complete LED technical package with drivers

| ITEM NO | INPUT POWER | TA CLASS | LUMINOUS FLUX (LUMINAIRE) |
|------------------|-------------|-----------------|---------------------------|
| 9441.200.V3.LM11 | 55 W | -20 °C...+45 °C | 8,500 lm |
| 9451.200.V3.LM11 | 75 W | -20 °C...+45 °C | 11,800 lm |



I-VALO DAVI® - AN LED LUMINAIRE FAMILY THAT IS UPDATEABLE

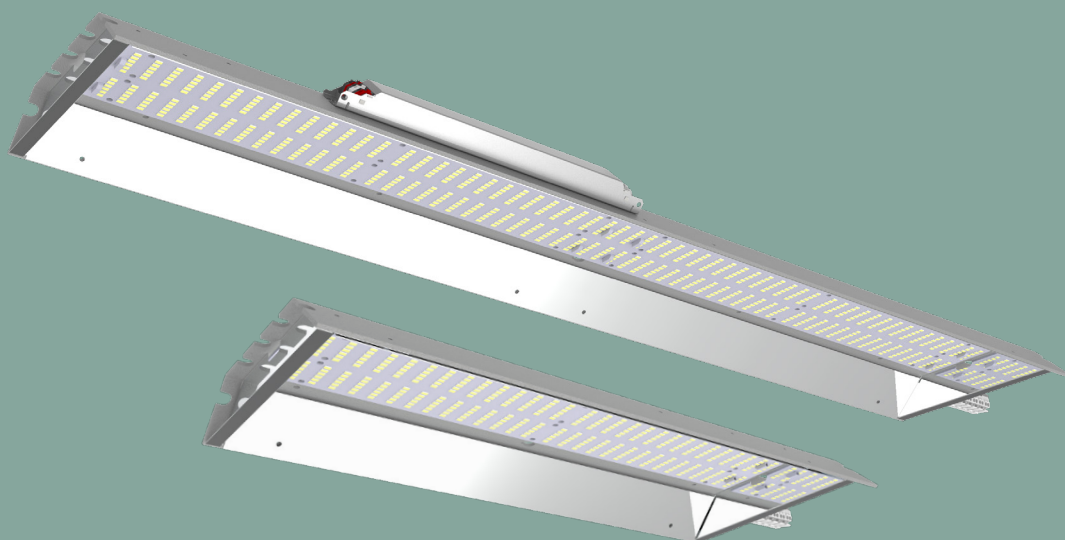


No need to worry about
replacement parts!



THE MOST UP-TO-DATE LED TECHNOLOGY IS ALWAYS AVAILABLE

The DAVI is an updateable, top-quality LED luminaire, designed especially for industrial lighting requirements. The technology in this luminaire is replaceable, which means that the whole luminaire does not need to be replaced when it reaches the end of its lifespan. The availability of spare parts is guaranteed by the continuous use of the latest LED technology, which will always fit into the same frame.

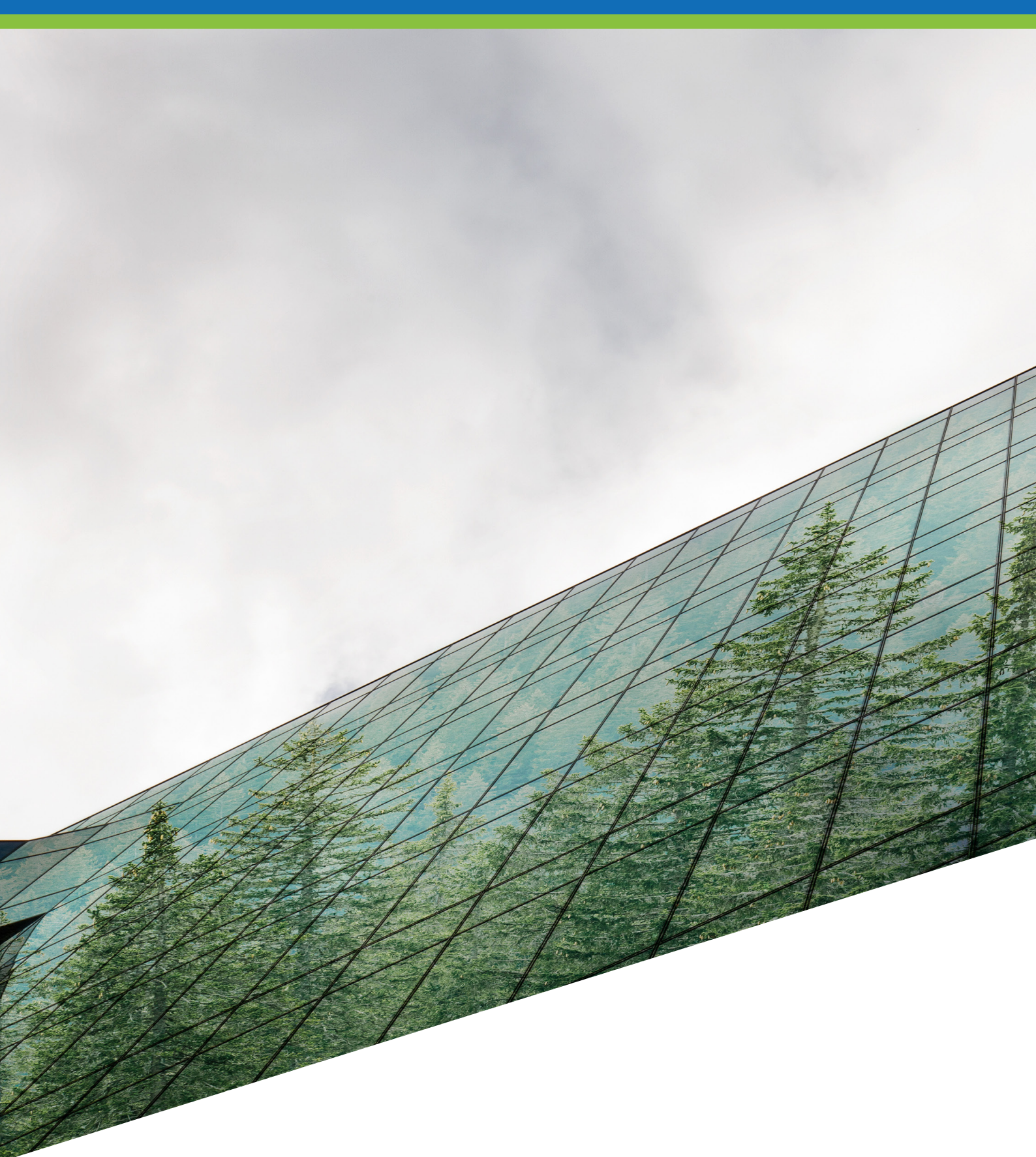


DAVI

LED service packs

Select the appropriate LED service pack according to the first five digits corresponding to the luminaire item number.

| ITEM NO | INPUT POWER | TA CLASS | LUMINOUS FLUX RANGE (LUMINAIRE) depending on luminaire cover |
|-------------------|-------------|---------------|---|
| Short DAVI | | | |
| DN10M | 31 W | -25°C...+60°C | 4,400 - 4,900 lm |
| DN10X | 31 W | -25°C...+60°C | 4,600 - 4,700 lm |
| DN20M | 59 W | -25°C...+45°C | 9,700 - 9,900 lm |
| DN20X | 59 W | -25°C...+45°C | 9,200 - 9,400 lm |
| DN21M | 83 W | -25°C...+40°C | 12,400 - 13,700 lm |
| DN21X | 83 W | -25°C...+40°C | 12,600 - 12,900 lm |
| Long DAVI | | | |
| DA20M | 59 W | -25°C...+50°C | 9,000 - 10,000 lm |
| DA20X | 59 W | -25°C...+50°C | 9,300 - 9,500 lm |
| DA40M | 119 W | -25°C...+45°C | 18,100 - 19,600 lm |
| DA40X | 119 W | -25°C...+45°C | 18,600 - 19,000 lm |
| DA41M | 166 W | -25°C...+40°C | 24,800 - 27,500 lm |
| DA41X | 166 W | -25°C...+40°C | 25,700 - 26,300 lm |



14500 Iittala, FINLAND
Tel. +358 (0)10 501 3000
info@i-valo.com

www.i-valo.com

All rights reserved © I-Valo Oy 10/2021