



UPDATE & MAINTENANCE  
**I-VALO LED SERVICE PACKAGES**

# I-VALO LED RETROFIT & UPDATE PACKAGES

## Sustainable products

Developing high-quality products with an emphasis on reliability with a long operating lifetime has always been one of the main priorities for I-Valo. Offering a wide selection of retrofit and update packages for I-Valo luminaires is an important part of our environmental thinking and sustainable product development.

A complete package including:

- LED modules
- Drivers
- Optics

Pre-installed in one package!



## Savings with modern lighting technology

I-Valo products are sustainable - the technology can be updated while the robust technical parts, such as the luminaire body and installation brackets, are retained. This is how I-Valo customers with traditional I-Valo luminaires can take advantage of modern technology and more efficient light sources, and thus achieve remarkable energy savings. With LED retrofit packages, for example, you can convert your existing HID and fluorescent fittings to modern LED luminaires.

## 6721 LED & 6741 LED

for ST/MT-70W - 150W lowbays

- A RetroFit package for I-Valo HID luminaires 6111, 6121, 6201, 6211, 6221 and 6301
- Includes a complete LED technique package with drivers
- As a rule of thumb, 6721 LED can be used to replace light sources like ST/MT-70W and MT-100W, whereas 6741 LED corresponds to ST-100W and MT-150W lowbay luminaires

ITEM NO	INPUT POWER	TA CLASS	LUMINOUS FLUX (LED MODULE)
6721.200.V3.LM11	58 W	-20°C...+45°C	8,400 lm
6741.200.V3.LM11	77 W	-25°C...+35°C	11,200 lm





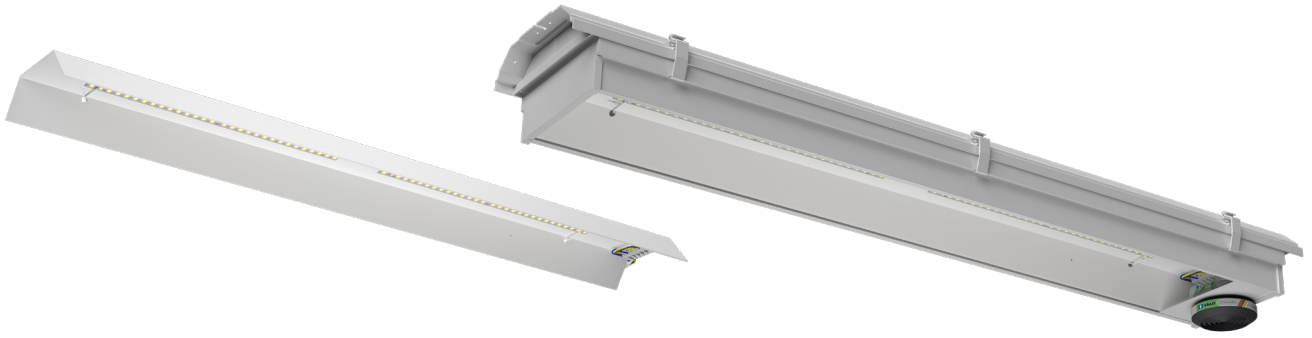
## 6231 LED

for MT-250W lowbays

- A RetroFit package for I-Valo HID luminaire 6231 (MT-250 W)
- The package includes an LED module equipped with two electronic drivers, a new cover frame with tempered frosted glass and a dust filter.
- The new lower cover optimises the luminous efficacy while effectively preventing uncomfortable glare.

Note: This RetroFit package also includes a new glass cover + filter!

ITEM NO	INPUT POWER	TA CLASS	LUMINOUS FLUX (LUMINAIRE)
6231.200.V3.LM11	128 W	-20°C...+35°C	17,100 lm



## 9441 LED & 9451 LED

for I-VALO T5 fluorescent luminaires

- For I-Valo T5 fluorescent luminaires 9441 (2 x FD-54W-G5) and 9451 (2 x FD-80W-G5)
- Includes a complete LED technical package with drivers

ITEM NO	INPUT POWER	TA CLASS	LUMINOUS FLUX (LUMINAIRE)
9441.200.V3.LM11	56 W	-20 °C...+45 °C	8,500 lm
9451.200.V3.LM11	77 W	-20 °C...+45 °C	11,800 lm



# I-VALO DAVI® - AN LED LUMINAIRE FAMILY THAT IS UPDATEABLE

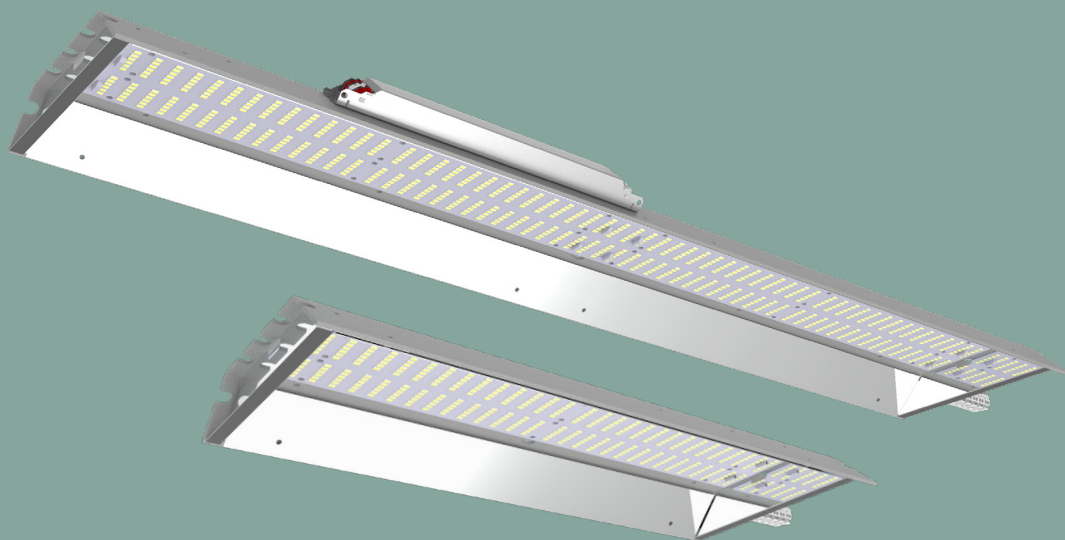


No need to worry about  
replacement parts!



# THE MOST UP-TO-DATE LED TECHNOLOGY IS ALWAYS AVAILABLE

The DAVI is an updateable, top-quality LED luminaire, designed especially for industrial lighting requirements. The technology in this luminaire is replaceable, which means that the whole luminaire does not need to be replaced when it reaches the end of its lifespan. The availability of spare parts is guaranteed by the continuous use of the latest LED technology, which will always fit into the same frame.



## DAVI

### LED service packs

Select the appropriate LED service pack according to the first five digits corresponding to the luminaire item number.

ITEM NO	INPUT POWER	TA CLASS	LUMINOUS FLUX RANGE (LUMINAIRE) depending on luminaire cover
<b>Short DAVI</b>			
DN10M	34 W	-25°C +60°C	4,400 - 4,900 lm
DN10X	34 W	-25°C +60°C	4,600 - 4,700 lm
DN20M	63 W	-25°C +50°C	9,700 - 9,900 lm
DN20X	63 W	-25°C +50°C	9,200 - 9,400 lm
DN21M	83 W	-25°C +40°C	12,400 - 13,700 lm
DN21X	83 W	-25°C +40°C	12,600 - 12,900 lm
<b>Long DAVI</b>			
DA20M	63 W	-25°C +50°C	9,000 - 10,000 lm
DA20X	63 W	-25°C +50°C	9,300 - 9,500 lm
DA40M	127 W	-25°C +45°C	18,100 - 19,600 lm
DA40X	127 W	-25°C +45°C	18,600 - 19,000 lm
DA41M	166 W	-25°C +40°C	24,800 - 27,500 lm
DA41X	166 W	-25°C +40°C	25,700 - 26,300 lm



I-Valo Oy  
Tehtaantie 3B  
14500 IITTALA, FINLAND  
+358 10 501 3000  
info@i-valo.com  
[www.i-valo.com](http://www.i-valo.com)